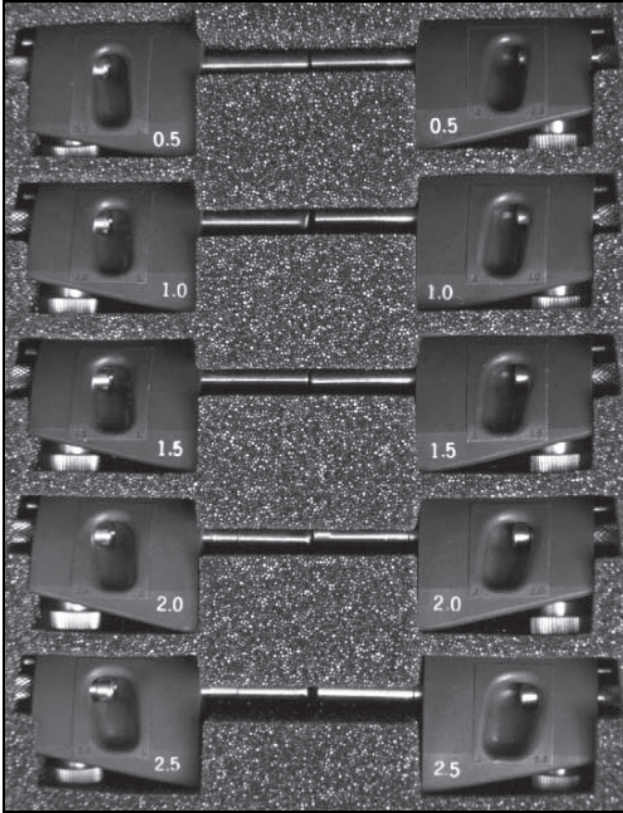
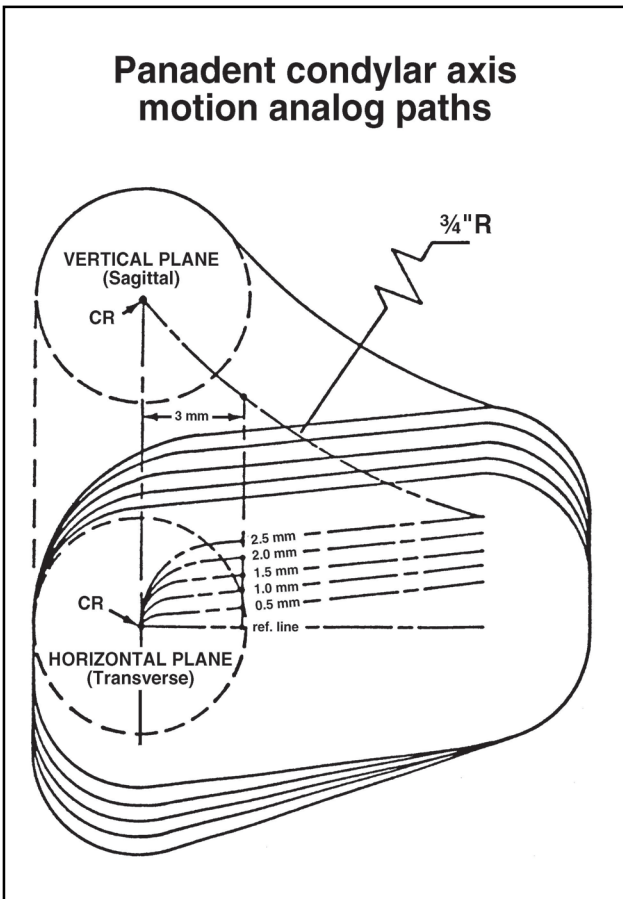


ARTICULATOR ACCESSORIES



- 2105 AA** **0.5 mm Motion Analogs** (right and left)
- 2110 AA** **1.0 mm Motion Analogs** (right and left)
- 2115 AA** **1.5 mm Motion Analogs** (right and left)
- 2120 AA** **2.0 mm Motion Analogs** (right and left)
- 2125 AA** **2.5 mm Motion Analogs** (right and left)

Available in sizes from 0.5mm to 2.5mm, in .5mm increments, the Motion Analogs represent all of the pathways including the border paths of the condyles in the fossa. To ensure accuracy, these blocks are created by precision molding and then machined to .005 tolerances. The analog blocks may be "mixed" on the articulator to represent the different right and left sides of a patient if needed.



A schematic of the Motion Analogs show the variations in the curved Bennett pathways, in the functional range of 3mm from centric relation. Also note that the condyles are coming down the protrusive pathway in the sagittal plane at the same time they go around the curved Bennett pathway in the transverse plane. The orbiting pathways, beyond the 3mm lateral point, are all 6 degrees. The Motion Analogs have been created with the 3/4 inch radius superior wall which allows them to be rotated to duplicate the patient's protrusive and lateral pathways.

| | | | | | | |
|-------------------------|-----|----|----|-----|---|-----|
| millimeters per side * | .25 | .5 | 1 | 1.5 | 2 | 2.5 |
| Percent (%) of Patients | 2 | 15 | 52 | 21 | 8 | 2 |

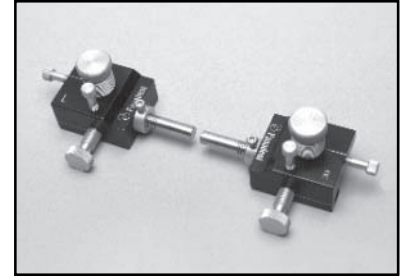
* Rt. & Lt. border movements measured on the non-working side 3mm forward on the vertical and horizontal planes from centric relation.

Distribution chart for 440 lateral movements recorded with the Lee research pantograph.

ARTICULATOR ACCESSORIES

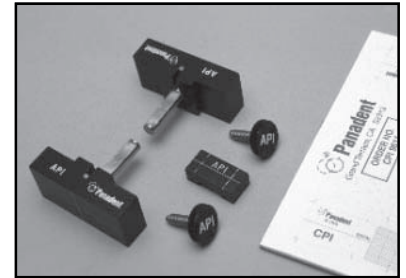
2370 AA Condyle Positioners (set)

The Condyle Positioners are used in the fabrication of repositioning splints or to simulate model surgery. They are put in place of the motion analogs and have both vertical and horizontal adjustment screws as well as a lateral adjustment feature. One revolution of the screws equal 1mm so that precision adjustments can be made. There are also 1mm lines on the axis shaft for the lateral adjustment.



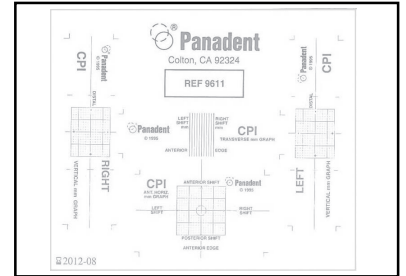
2170 AA Axis Position Indicator System (API)

The Axis Position Indicator System is used to track the condyles to a stable position during splint therapy, for determining CR/CO discrepancies (slide vs. fulcrum) and interocclusal record verification.



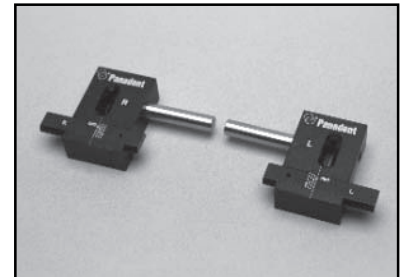
9611 AA API Graph Papers (set of 20)

The API Graph Papers are used with the Axis Position Indicator System. They are produced on a crack-n-peel paper for convenient removal from the pad and then placement on the graph supports.



2151 AA Analog Selectors (set)

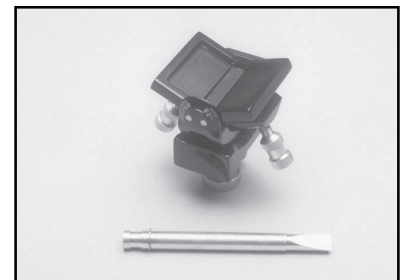
The Analog Selectors are used in conjunction with lateral check bites to determine the amount of Bennett movement for selecting the proper Motion Analog for the individual patient. They measure from 0 to 3mm Bennett per side.



1770 AA Adjustable Incisal Table (PCH)

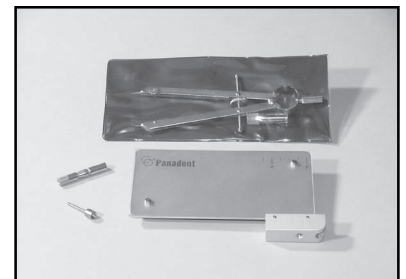
1780 AA Adjustable Incisal Table (PSH & SH)

The Adjustable Incisal Table can be set to different incisal and lateral angles to simulate incisal and canine guidance to help guide the fabrication of removable prostheses.



1760 AA Broadrick Occlusal Plane Analyzer

The Broadrick Occlusal plane analyzer is used for analyzing the Curve of Spee and developing an acceptable curve of occlusion. A flag or semaphore is common to the art of dentistry and has been used and described many times in writings or teaching procedures over the years.



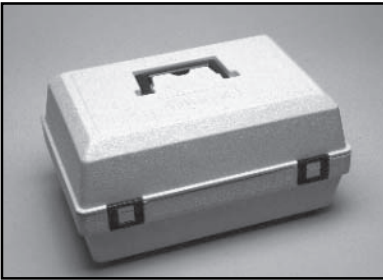
ARTICULATOR ACCESSORIES



2090 AA **Articulator Test Column**

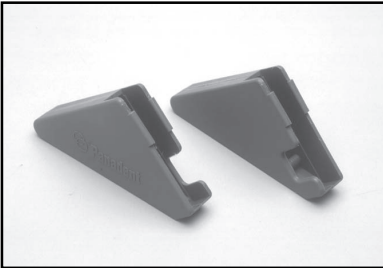
2890 AA **Articulator Test Column** (Magnetic)

The Articulator Test Column is used to check the accuracy of the interchangeable model PCH and PSH articulators. Pour the last section with stone to form a split cast index. The column can be sent to your laboratory to check if the compatibility is the same as your articulator.



8210 AA **Molded Plastic Case**

This high impact, molded Plastic Case is used to carry the articulator, face-bow, mandibular mounting stand, mounting plates and diagnostic casts with room left over for accessory supplies. Convenient to carry to the lab, study club or workshop meetings.



2094 AA **Articulator Support Legs**

The articulator support legs allow the articulator to be angled back 45° to give a direct, hands-free overall view of the dental casts. The support legs will facilitate technicians in the laboratory, help dentists in diagnosing and photography procedures, and are essential for patient education and consultations. The support legs easily slide and clip onto the lower frame of all Panadent articulators.



2013 AA **Incisal Table** (plastic)

This is the standard Panadent plastic incisal table for the articulator. Included is the attachment thumb screw. It is molded with a threaded brass insert for the attachment screw. The table is also used with the Panadent CPI-III System.



9904 AA **Hex Wrench** (for articulator)

This is the standard wrench for locking the articulator motion analog shafts, mounting plate screws, etc.