

DENTAL PRODUCTS



3001 DP *ProxiFit™ Module*

The *ProxiFit™* module simplifies and improves interproximal contact adjusting of crowns, onlays, inlays and veneers by showing exactly where and how much to adjust. The unique Ribbon Gripping Forceps (RGF) holds pre-cut, individual mylar test ribbons at 90° to interproximal embrasures. The test ribbons are ultra thin (.0007") and coated on both sides with either black or red marking dye to provide unsurpassed precision in marking interproximal contacts.



3050 DP *ProxiFit™ Test Ribbons* (2Pkg. Black)

3055 DP *ProxiFit™ Test Ribbons* (2 Pkg. Red)

3060 DP *ProxiFit™ Test Ribbons* (1 Pkg. ea.)

Each box contains 120 pre-cut, protected, double-sided black or red test ribbons that are .0007 inch thickness (17 microns). These sanitary, convenient marking ribbons are used with the Proxi-Fit forcep to accurately mark heavy interproximal contacts of restorations being placed.



4405 DP *Bite-Tab™ Compound Disks* (180)

Bite-Tabs are constructed from red impression compound deposited on self adhesive strips. *Bite-Tabs* can be used with most brands of bite forks. Remove *Bite-Tab* by adhesive strip and place on bite fork. Temper compound in hot tap water before indexing on patients teeth. To remove used tab, dip in hot water and simply peel adhesive strip off of bite fork.



7172 DP *Bite-Tray™ Registration Plates* (20)

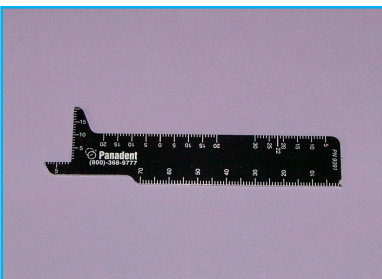
7175 DP *Bite-Tray™ Registration Plates* (50)

Bite-Trays are made of soft aluminum and are designed for accurate jaw position interocclusal records. Excellent for taking centric, protrusive and lateral border records. Although a ZOE paste is recommended, the trays can be used with any bite registration material desired.



9390 DP *Leaf Gauge* (numbered)

This leaf gauge is made of polyester strips and are numbered (1-56) in 1/10th mm increments for convenience. They are used as an anterior deprogrammer for taking centric records and can also be used in equilibration or coronoplasty procedures.



9391 DP *Multi-Measuring Ruler*

The MMR is used for measuring tooth lengths, tooth widths, vertical overbite, horizontal overjet, as well as a range of motion scales.

DENTAL PRODUCTS

9395 DP Golden Ruler

The **Golden Ruler** measuring device is designed to help determine orofacial dimensions, such as vertical dimensions, incisor height, and tooth width. It is calibrated to correspond to the "Golden Proportion" principle (1:1.618) and is said to be useful for achieving esthetic results.



9396 DP Golden Section Divider & Grids Kit

The Golden Section Divider measuring device is designed to help determine orofacial dimensions, such as vertical dimensions, incisor height, and tooth width. It is calibrated to correspond to the "Golden Proportion" principle (1:1.618) and is said to be useful for achieving esthetic results.

This kit also includes a manual and set of 6 golden section disposable paper grids pads, with approximately 30 sheets per pad.



4340 DP Golden Section Grids (1 pad of each 6 sizes)

4341 DP Golden Section Grids (6 pads of 7.0mm)

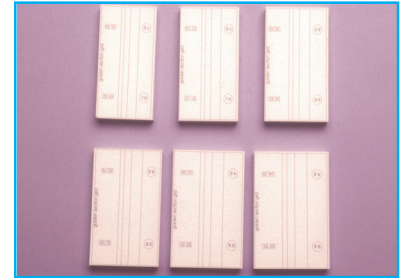
4342 DP Golden Section Grids (6 pads of 7.5mm)

4343 DP Golden Section Grids (6 pads of 8.0mm)

4344 DP Golden Section Grids (6 pads of 8.5mm)

4345 DP Golden Section Grids (6 pads of 9.0mm)

4346 DP Golden Section Grids (6 pads of 9.5mm)



4330 AA Golden Proportion Waxing Guides (set of 7)

The Golden Proportion Waxing Guides can be used with the Kois Adjustable Platform or by themselves to facilitate incorporating the golden proportion ratios of tooth widths into anterior restorations.

